



***Introducing  
the Echo DOT  
by Amazon***



# Introduction

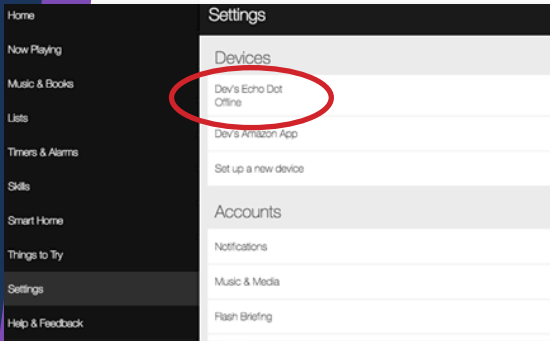
Congratulations on your decision to use the Echo DOT, Amazon's voice-controlled speaker! This wireless speaker can be placed anywhere in the home or office and by easily connecting to the Internet, it can expand its smart-home, music, digital-assistant capabilities, and so much more.

Using Alexa on the Echo DOT, you can play music, search the Internet, create lists, shop online, get weather reports, and control smart-home products all with nothing more than the sound of your voice. There is no need to use a smart phone or even own a smart phone. Tell Alexa what you want to do and let her take care of the rest.

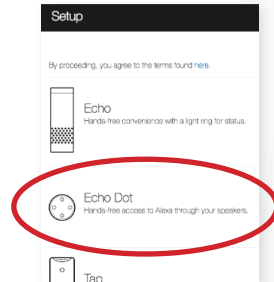
# Setting Up Your Echo DOT

Go to <http://alexa.amazon.com/> and log in with your username and password.

On the Settings page, click **Set up new device**.

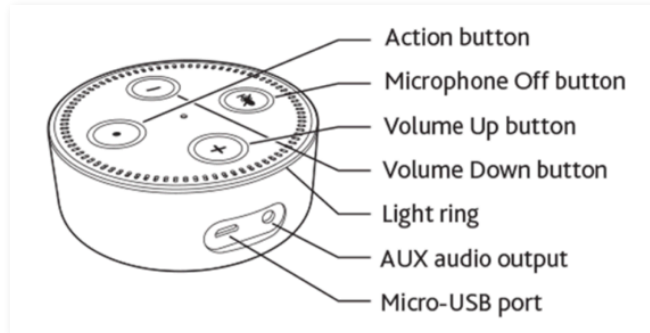


From there, you will select the type of device you have.



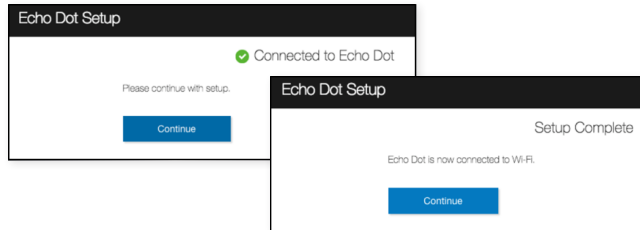
## Setting Up Your Echo DOT (cont'd)

It will then ask you to connect to the Wi-Fi mode on your Echo DOT. Push the action button on your device for about 5 seconds. The light will turn orange.



# Connecting Your Computer to the Echo DOT

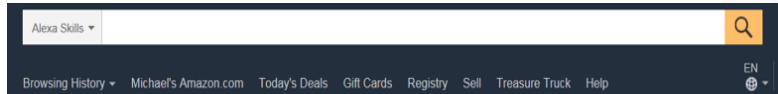
Go to the Wi-Fi settings on your computer and select the network of the format Amazon-XXX. It may take up to a minute to display. Wait until the Echo DOT says you are connected, and then continue.



Once your device is added, it will synchronize with your Amazon account.

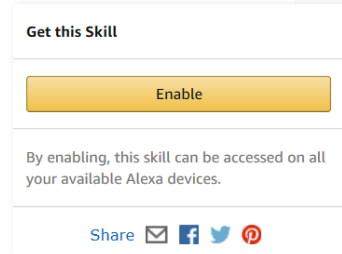
# Enabling Alexa Skills

You are now ready to enable Skills to use with your Echo DOT. Go to your Amazon account and pull up the Skills Menu in the search bar.



You will need to enable the Skill you want to use. To enable the Ecolane Skill, type **Ecolane** in the search bar.

Once you find it, click on the **Enable** button on the right-hand side.



***Thank you for choosing  
the Echo DOT!***



**Ecolane**